



# Company Profile

Smart solutions for residential, office and industrial automation



We are a traditional, innovative and purely Czech manufacturer of electronic devices and we have been your partner in the field of electro-installations for 26 years. Thanks to the many years of experience and our market activities we are able to say that we have become specialists in the field of modular electronic devices - relays, of which we produce more than 200 types. Our own production, modern tools and devices, research and development center. All these allow us to head towards development of the most sought-after technology: the intelligent electro-installation INELS system





When I was twenty and freshly trained in electronics, and I engineered my first time relay, I had no idea that today I would be controlling it from smartphone apps. It not only became a fact, but a complete given. For a long time now, we have been offering not just “components for automation“, but entire solutions, fulfilling customer requirements down to the last detail. What separates us from the competition is not only our flexibility and ready approach to custom modifications, but also the desire to “Always something more!“

**Jiří Konečný** | Founder, owner & CEO of the company





**2<sup>nd</sup> position**  
in Europe

**12 000 000**  
MANUFACTURED PRODUCTS

**330**  
EMPLOYEES

**13**  
BRANCHES  
OVER THE WORLD

**70**  
EXPORTING  
COUNTRIES

**10 000**  
iNELS INSTALLATION

# Milestones



- 1993 ○ Jiří Konečný started business in this field, in his garage / First product was switching power units for electrical heating
- 1997 ● The company ELKO EP Ltd. was founded**
- 2002 ○ First branch office ELKO EP Slovakia, export was started
- 2005 ○ New production and office spaces in Holešov - Všetuly / New branch offices ELKO EP Poland and ELKO EP Hungary
- 2006 ○ Intelligent electro-installation iNELS BUS launched to the market
- 2007 ○ Establishing a branch office ELKO EP Russia
- 2008 ○ Intelligent electro-installation iNELS RF (wireless control) launched to the market
- 2009 ○ Branch office ELKO EP Ukraine / Exclusive distributor of sockets and switches LOGUS<sup>90</sup>
- 2010 ○ iNELS Multimedia launched to the market / Awards of "Innovation of the Year" for RF Touch
- 2011 ○ "Gold Amper" award for RF Touch / New warehouse / Establishing ELKO Lighting Ltd
- 2012 ● ELKO EP - The company of the year**
- 2013 ○ 20 years on the market / New branch offices ELKO EP España and ELKO EP Germany GmbH
- 2014 ○ Awards for LARA and Smart RF Box
- 2015 ○ Wireless system iNELS scores – winning the prestigious award Visionary 2015  
○ New branch office ELKO EP Middle East in Dubai
- 2016 ○ Own test lab opened, award for iNELS Future office
- 2017 ○ Introducing the product line IoT iNELS Air / Presenting iNELS Smart City
- 2018 ○ Establishing a branch office ELKO EP Baltic / iNELS BMS introducing
- 2019 ○ Smart pole deployment as a keystone in Smart City



# Our Strengths

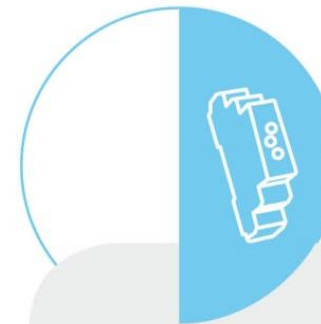


## WE ARE



### DEVELOPERS

In the new R&D center, more than 30 engineers develop new products and extend the functionality of existing products.



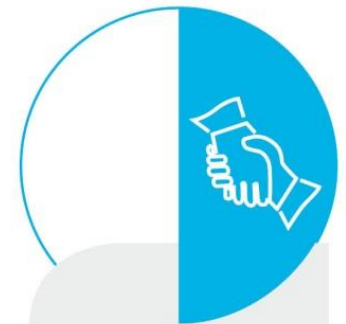
### PRODUCERS

Modern antistatic spaces, 2x fully automated SMD production lines, 2 shift operations.



### SUPPORT

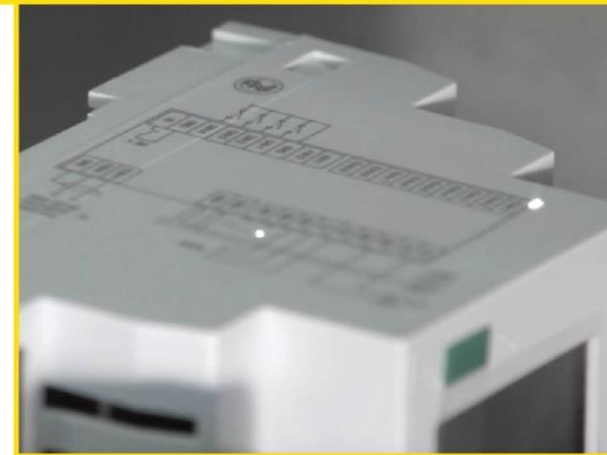
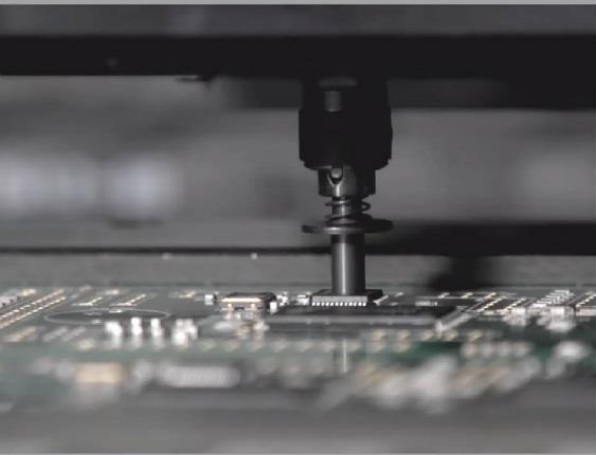
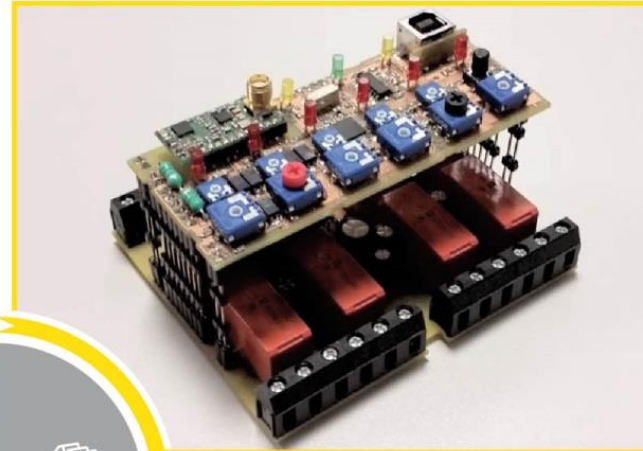
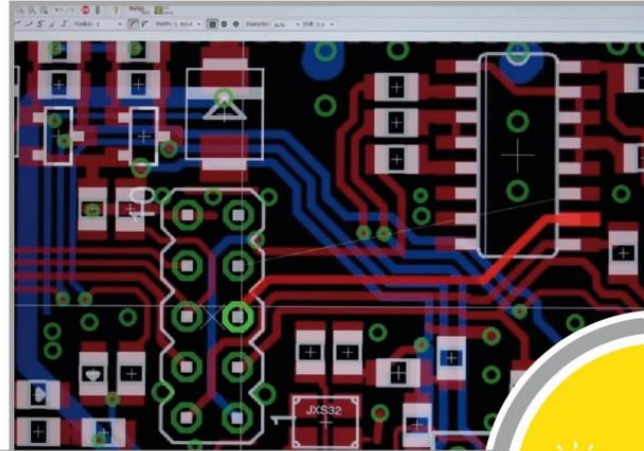
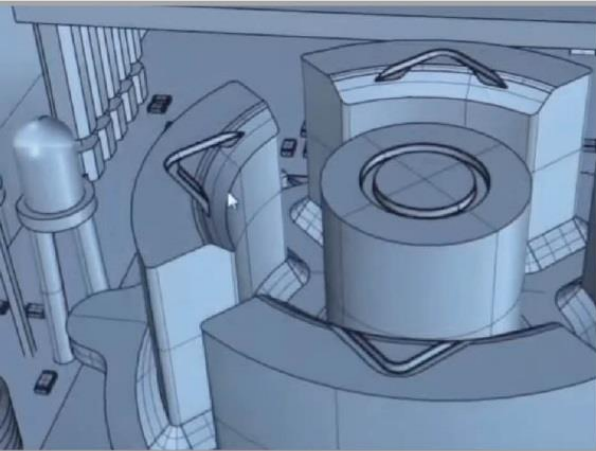
24 hours / 7 days / 360 days we not only provide technical support but also logistics.



### SELLERS

Personal access to more than 70 sales representatives in ELKO EP Holding provides impeccable services and superior products at an affordable price.

# We are developers as well as producers

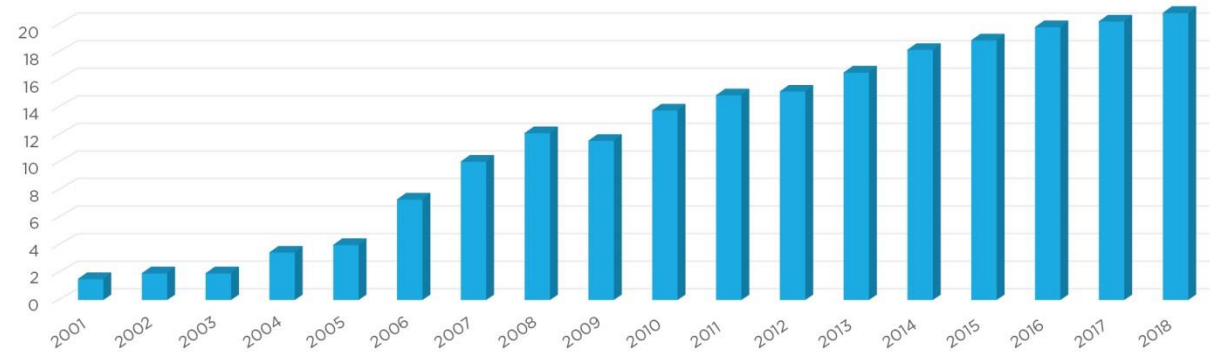


# Holding numbers evolution



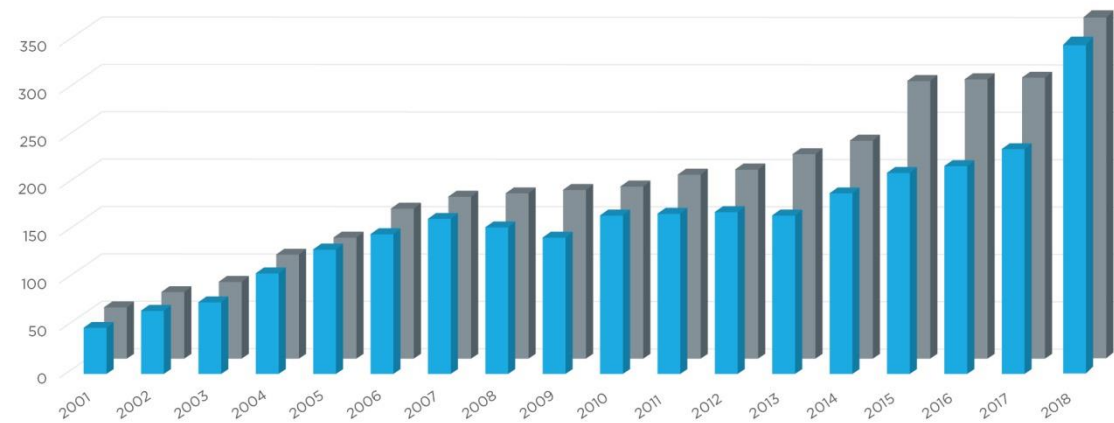
- Turnover

Mil. EUR



- Employees

• Headquarters      • Holding





# Awards & Achievements



## Corporate awards



**Jiří Konečný**  
The Entrepreneur  
of the year 2004



**Company**  
of the year 2012



**Visionaries**  
2015



**ELKO EP Company** ranked  
among the 100 best  
Czech companies



**Global exporter**  
2016

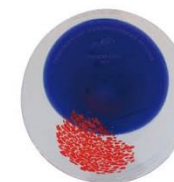


**Jiří Konečný**  
Personality of  
Smart City 2017

## Product awards



**Golden product**  
for „SMR-T“



**ELA awards** for  
“RF Touch“



**The honorable mention**  
for “iNELS RF Control“



**Golden Amper** for  
“wireless electro-installation“



**Czech electro  
association awards**  
for “LARA“



**Awards** for  
“Smart RF Box“

# Associations Membership

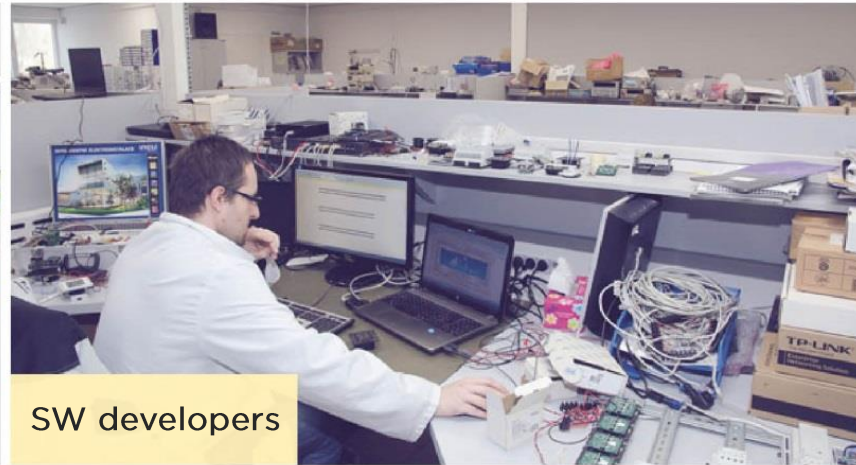




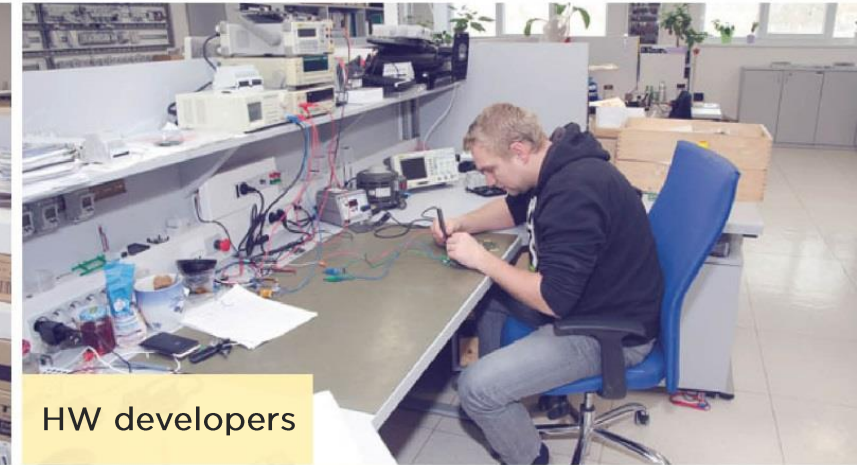
# Research & Development



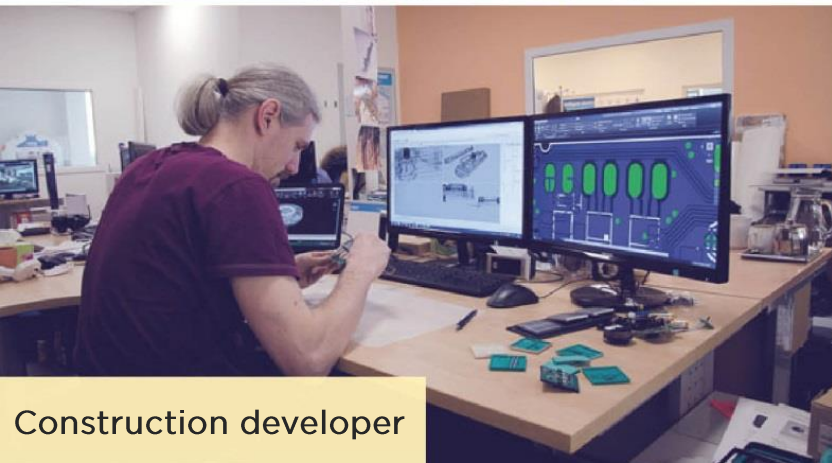
R&D overall view



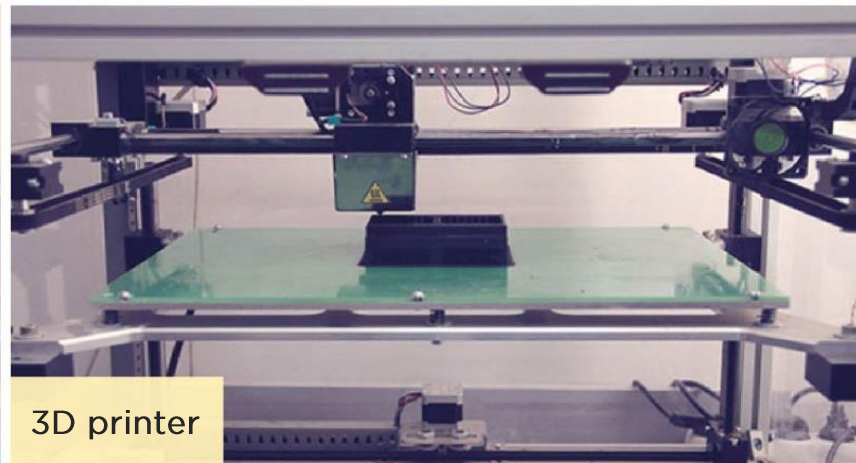
SW developers



HW developers



Construction developer



3D printer



Internal tests lab

# High-level technology in Production



- More than 90 % share formed by SMD components
- 2x fully automated Samsung SMD production lines
- Capacity: 45 000 components/hour
- The minimum chip size is 0105 (0,4 x 0,2 mm), the maximum size is qfp 55 x 55mm





# High-level technology in Production



## LINE 1

Production line for SMD assembling



## LINE 2

Production line for SMD assembling



## LINE 3

Production line for SMD assembling



AUTOMATICAL  
OPTICAL  
INSPECTION

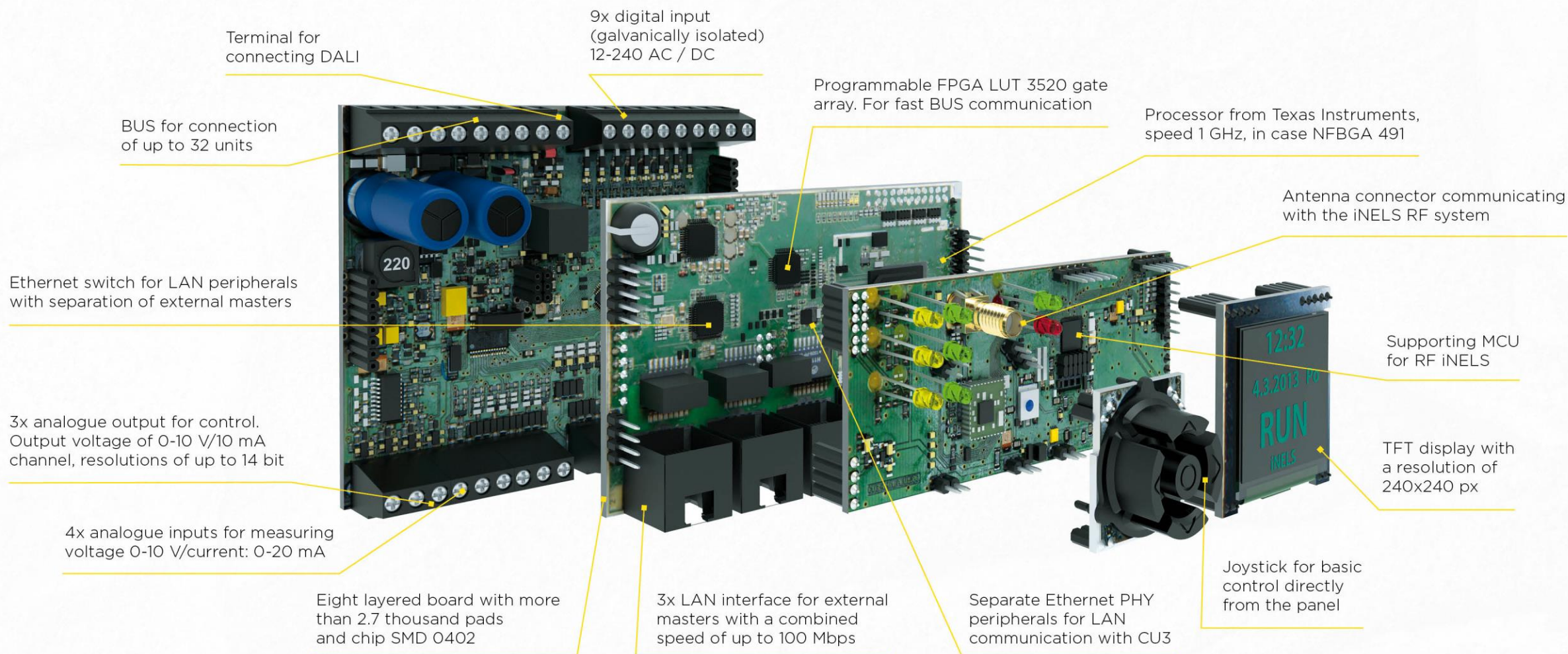


LASER  
PRINTING

# High-Level technology in Products

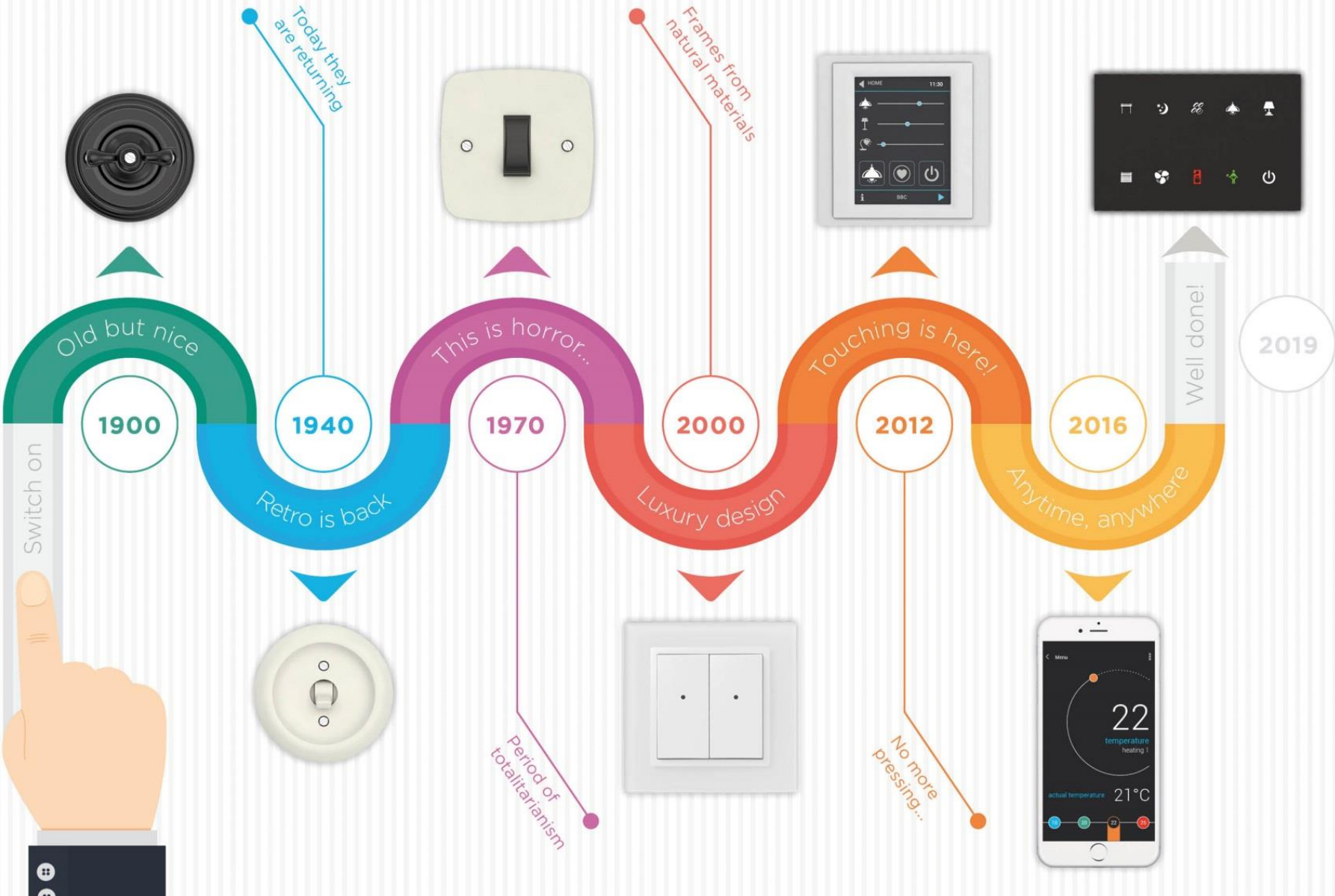


## Central unit CU3-03M





# Switch evolution



# Wide portfolio for universal solutions



Timers/Relays



Protecting  
/Monitoring relays



iNELS Air  
- IoT devices



Wireless  
electro-instalation (RF)



Wired  
electro-instalation  
(BUS)



Energy  
management



Hotel wireless  
Retrofit (HRESK)



Hospitality  
Hotel (GRMS)



Building  
Management System



Lighting control



Multimedia



Switches  
and sockets



# Most famous OEM brands proof our quality





# Smart System Solution

**inELS®**



## Apartment

Wireless installation  
in an existing flats



## Villa

Central control of all function on the  
touch panel, via TV or via mobile



## Hotel

Smart management of the hotel  
and maximum comfort for guests





# Smart System Solution

iNELS®



## Future office

Efficient, economical  
and healthy workspaces



## Commercial

Technology and energy  
under perfect control



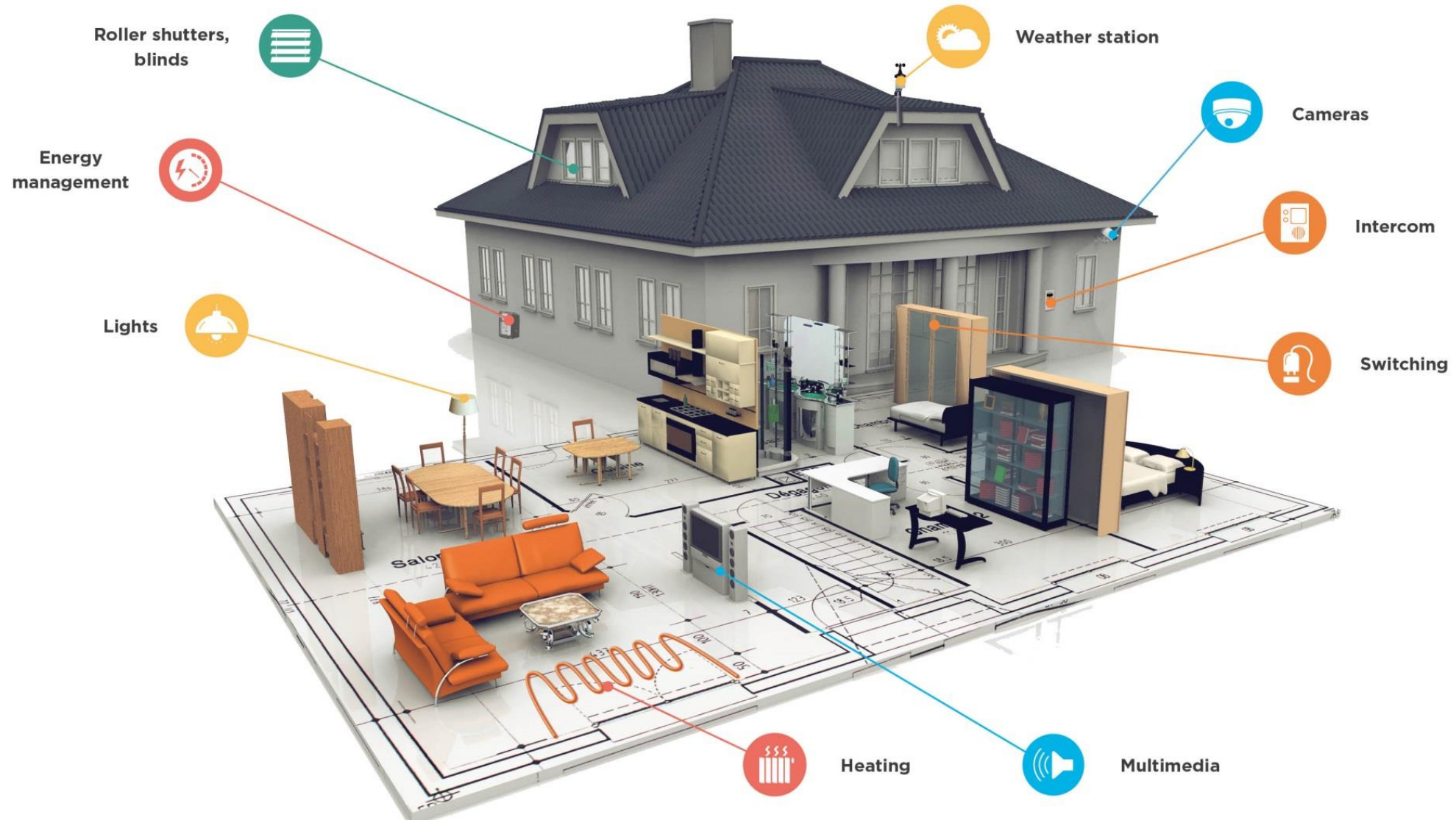
## Smart City

iNELS as a way to effectively  
manage the city



# Smart Home – What can I control?

iNELS®





## Building Management System

- It is an integral part of any modern building
- It integrates the different technologies into the building into one unit
- Contemporary buildings focus on energy consumption, safety, quality and healthy work environment
- iNELS BMS is powered and Full compatible with Honeywell Niagara standards



## For new & existing hotel rooms

- iNELS smart system is ready to fulfil its function of security, clarity and comfort for the guest
- The card, chips or phone access system provides on-line access to the room
- Motion sensors can then be set directly to the home environment
- The clear glass panels at the bed or the central touch panels at the entrance can control everything the guest may want
- Interconnection at the reception and the hotel's service is a matter of course



Comfort



Savings



Design



Safety



Flexibility





# Smart City

- Smart City is tomorrow's place
- It will be at the heart of the revolution and innovative solutions
- We offer not only the products but also the technology that are the basis of every Smart City
- Smart buildings, urban furniture, air condition monitoring or weather monitoring and environmental aspects



Eliminating  
crime



Permanent  
surveillance



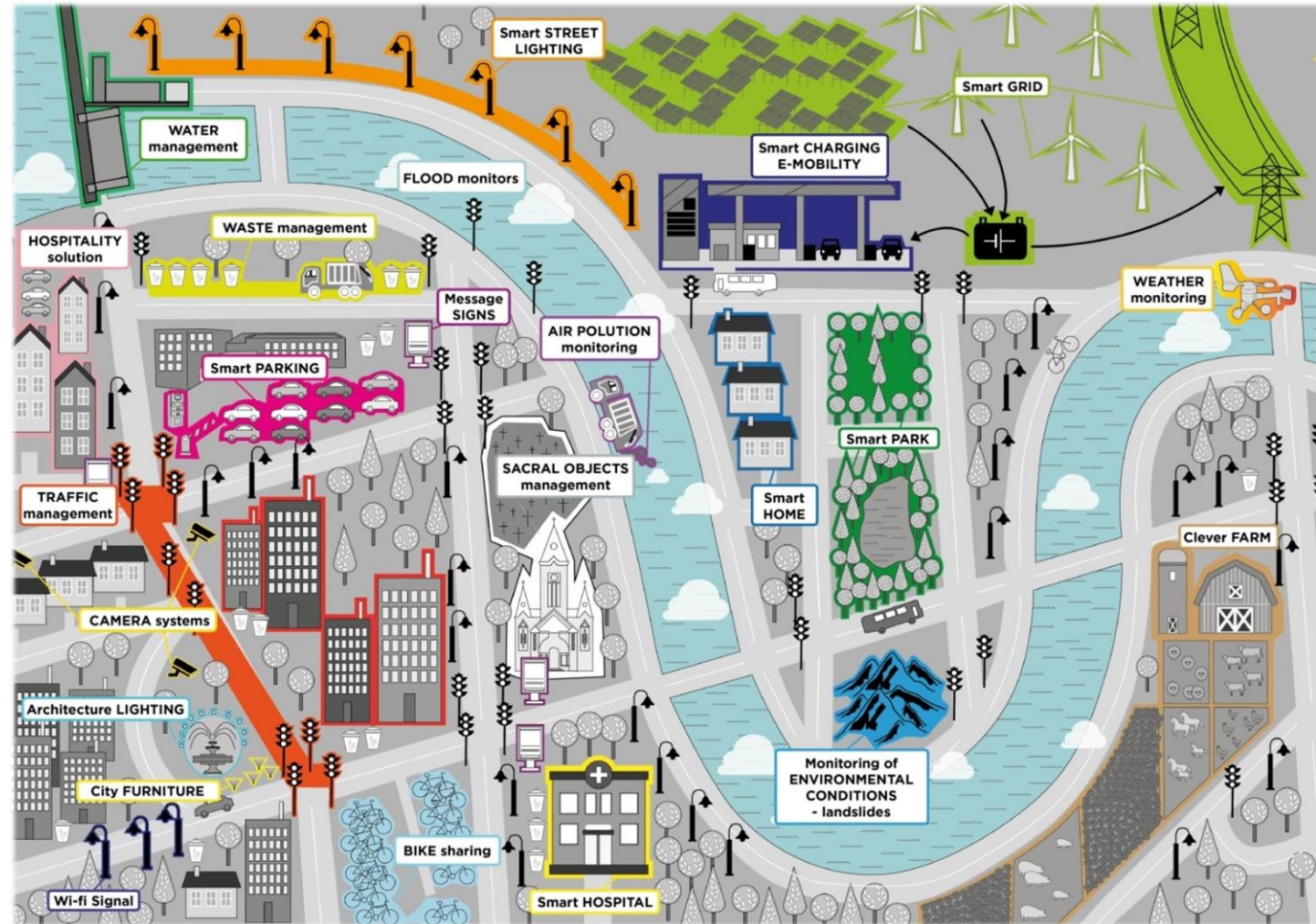
Property  
protection



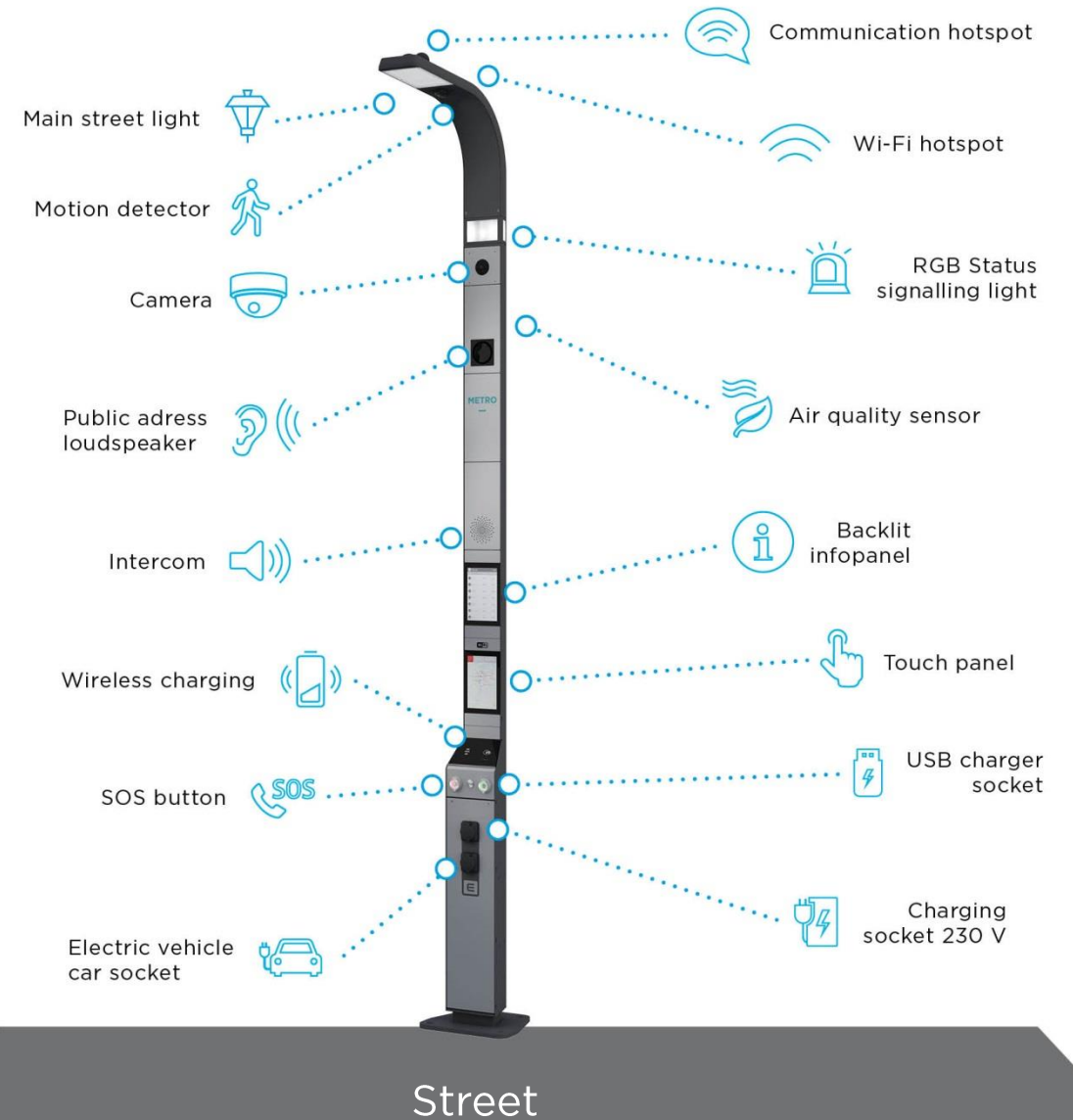
Warning on  
time system



Call for immediate  
assistance



- The Smart Pole of iNELS is designed for regular street lighting in any „Street“ but in the „City“ its options make it an ideal technological oasis
- It also brings additional extensions: air quality monitoring, bicycle rechargers, SOS button, intercom, interactive touch panel
- All technologies are integrated into the Smart City Platform



- We help by employing disabled people
- We proudly sponsor charitable organizations
- The charity project „Good Angel“
- We provide benefits to our workers
- Rewarding for successful and creative ideas
- Social security protection
- Support for graduates
- Cooperation with school



Rewards



Support  
for graduates



Social  
security





# Environmentally Friendly



- We develop and produce energy saving devices
- iNELS is key to passive and low-energy houses
- Production without environmental impact
- ISO 14001 (environmental management system)
- System of sorted waste collection
- Complies with the RoHS Directive



ECO friendly



Savings



Low-energy



- We work with schools and universities
- We support them with laboratory and scientific equipment
- We hold seminars, training sessions, consultations and discussion days



Work  
with schools



Scientific  
equipment



Seminars



# Process Certifications



## ISO 9001



## ISO 14001





# Approvals



**ТАМОЖЕННЫЙ СОЮЗ**

**СЕРТИФИКАТ СООТВЕТСТВИЯ**

№ ТС RU CZ.A173.B.00226

Серия RU № 0007823

**ОРГАН ПО СЕРТИФИКАЦИИ** Общество с ограниченной ответственностью "ПРОГРЕСС", 115088, город Москва, Калужская улица, дом 2, строение 1, офис В. Телефон 4957787662, факс 4957787662, адрес электронной почты progress\_ru@bk.ru, Адрес электронной почты RU-0001-11A777 выдан 06.06.2013 Федеральным агентством по техническому регулированию и метрологии.

**ЗАЯВИТЕЛЬ** Общество с ограниченной ответственностью "ЭЛКО ЭП РУС", ОГРН 5147746337723. Место нахождения: 125049, город Москва, митрицкая Голландская улица, дом 12, офис 23, Российская Федерация. Физический адрес: 125047, город Москва, улица 4-я Тверская-Ямская, дом 33/35, подъезд 8, первый этаж, офис №159, Российская Федерация. Телефон 8(499) 978-77-42, факс 8(499) 978-77-42, адрес электронной почты markov@elkor.ru.

**ИЗГОТОВИТЕЛЬ** "ELKO EP, s.r.o.", Место нахождения: Palackého 493, 769 01 Holštejn, Vltava, Czech Republic, Чешская Республика. Физический адрес: Palackého 493, 769 01 Holštejn, Vltava, Czech Republic, Чешская Республика.

**ПРОДУКЦИЯ** Оборудование электросвязное: цифровая табулятор, модели: SHT, PDR, SOU, DCTU B, беспроводные передатчики, модели: SEM, SMR, MR, PDM, системы и вспомогательные модули, модели: VS, TBL, TBL, ES, VSM, VAK, регистраторы сигналов, модели: DIM, LIC, DCTA, BMR, устройства оптической сигнализации и индикации, модели: MPR, USS, реле контроля тока, модели: PRL, SR, реле контроля уровня жидкости, модели: MBL, реле контроля напряжения, модели: HBN, HRF, реле контроля мощности, модель COS, терморегуляторы прогревающих, модели: TEL, TEV, THT, RVU, ATE, ATY, ATC, DTC, DTY, ATY. Продукция изготовлена в соответствии с директивами 2006/95/EC, 2004/108/EC. Серийный выпуск.

**КОАТИВЭД ТС** 8537 10 910 9, 8536 49 000 0, 9032 10 200 9

**СООТВЕТСТВУЕТ ТРЕБОВАНИЯМ** Технического Регламента Таможенного Союза 004/2011 "О безопасности электрического оборудования", утв. Решением Комиссии Таможенного союза от 18 августа 2011 года № 768. Технического Регламента Таможенного Союза 020/2011 "Электромагнитная совместимость технических средств", утв. Решением ЕТС от 4 декабря 2011 года № 879.

**СЕРТИФИКАТ ВЪЕЗДА НА ОСНОВАНИИ** Протокола испытаний № 730LAB03.15, № 730EM-LAB03.15, № 731LAB03.15, № 731EM-LAB03.15, № 732LAB03.15, № 732EM-LAB03.15, № 733LAB03.15, № 733EM-LAB03.15, № 734LAB03.15, № 734EM-LAB03.15, № 735LAB03.15, № 735EM-LAB03.15, № 736LAB03.15, № 736EM-LAB03.15, № 737LAB03.15, № 737EM-LAB03.15, № 738LAB03.15, № 738EM-LAB03.15, № 739LAB03.15, № 739EM-LAB03.15, № 740LAB03.15, № 740EM-LAB03.15, № 741LAB03.15, № 741EM-LAB03.15, № 742LAB03.15, № 742EM-LAB03.15, № 743LAB03.15, № 743EM-LAB03.15, № 744LAB03.15, № 744EM-LAB03.15, № 745LAB03.15, № 745EM-LAB03.15, № 746LAB03.15, № 746EM-LAB03.15, № 747LAB03.15, № 747EM-LAB03.15, № 748LAB03.15, № 748EM-LAB03.15, № 749LAB03.15, № 749EM-LAB03.15, № 750LAB03.15, № 750EM-LAB03.15, № 751LAB03.15, № 751EM-LAB03.15, № 752LAB03.15, № 752EM-LAB03.15, № 753LAB03.15, № 753EM-LAB03.15, № 754LAB03.15, № 754EM-LAB03.15, № 755LAB03.15, № 755EM-LAB03.15, № 756LAB03.15, № 756EM-LAB03.15, № 757LAB03.15, № 757EM-LAB03.15, № 758LAB03.15, № 758EM-LAB03.15, № 759LAB03.15, № 759EM-LAB03.15, № 760LAB03.15, № 760EM-LAB03.15, № 761LAB03.15, № 761EM-LAB03.15, № 762LAB03.15, № 762EM-LAB03.15, № 763LAB03.15, № 763EM-LAB03.15, № 764LAB03.15, № 764EM-LAB03.15, № 765LAB03.15, № 765EM-LAB03.15, № 766LAB03.15, № 766EM-LAB03.15, № 767LAB03.15, № 767EM-LAB03.15, № 768LAB03.15, № 768EM-LAB03.15, № 769LAB03.15, № 769EM-LAB03.15, № 770LAB03.15, № 770EM-LAB03.15, № 771LAB03.15, № 771EM-LAB03.15, № 772LAB03.15, № 772EM-LAB03.15, № 773LAB03.15, № 773EM-LAB03.15, № 774LAB03.15, № 774EM-LAB03.15, № 775LAB03.15, № 775EM-LAB03.15, № 776LAB03.15, № 776EM-LAB03.15, № 777LAB03.15, № 777EM-LAB03.15, № 778LAB03.15, № 778EM-LAB03.15, № 779LAB03.15, № 779EM-LAB03.15, № 780LAB03.15, № 780EM-LAB03.15, № 781LAB03.15, № 781EM-LAB03.15, № 782LAB03.15, № 782EM-LAB03.15, № 783LAB03.15, № 783EM-LAB03.15, № 784LAB03.15, № 784EM-LAB03.15, № 785LAB03.15, № 785EM-LAB03.15, № 786LAB03.15, № 786EM-LAB03.15, № 787LAB03.15, № 787EM-LAB03.15, № 788LAB03.15, № 788EM-LAB03.15, № 789LAB03.15, № 789EM-LAB03.15, № 790LAB03.15, № 790EM-LAB03.15, № 791LAB03.15, № 791EM-LAB03.15, № 792LAB03.15, № 792EM-LAB03.15, № 793LAB03.15, № 793EM-LAB03.15, № 794LAB03.15, № 794EM-LAB03.15, № 795LAB03.15, № 795EM-LAB03.15, № 796LAB03.15, № 796EM-LAB03.15, № 797LAB03.15, № 797EM-LAB03.15, № 798LAB03.15, № 798EM-LAB03.15, № 799LAB03.15, № 799EM-LAB03.15, № 800LAB03.15, № 800EM-LAB03.15, № 801LAB03.15, № 801EM-LAB03.15, № 802LAB03.15, № 802EM-LAB03.15, № 803LAB03.15, № 803EM-LAB03.15, № 804LAB03.15, № 804EM-LAB03.15, № 805LAB03.15, № 805EM-LAB03.15, № 806LAB03.15, № 806EM-LAB03.15, № 807LAB03.15, № 807EM-LAB03.15, № 808LAB03.15, № 808EM-LAB03.15, № 809LAB03.15, № 809EM-LAB03.15, № 810LAB03.15, № 810EM-LAB03.15, № 811LAB03.15, № 811EM-LAB03.15, № 812LAB03.15, № 812EM-LAB03.15, № 813LAB03.15, № 813EM-LAB03.15, № 814LAB03.15, № 814EM-LAB03.15, № 815LAB03.15, № 815EM-LAB03.15, № 816LAB03.15, № 816EM-LAB03.15, № 817LAB03.15, № 817EM-LAB03.15, № 818LAB03.15, № 818EM-LAB03.15, № 819LAB03.15, № 819EM-LAB03.15, № 820LAB03.15, № 820EM-LAB03.15, № 821LAB03.15, № 821EM-LAB03.15, № 822LAB03.15, № 822EM-LAB03.15, № 823LAB03.15, № 823EM-LAB03.15, № 824LAB03.15, № 824EM-LAB03.15, № 825LAB03.15, № 825EM-LAB03.15, № 826LAB03.15, № 826EM-LAB03.15, № 827LAB03.15, № 827EM-LAB03.15, № 828LAB03.15, № 828EM-LAB03.15, № 829LAB03.15, № 829EM-LAB03.15, № 830LAB03.15, № 830EM-LAB03.15, № 831LAB03.15, № 831EM-LAB03.15, № 832LAB03.15, № 832EM-LAB03.15, № 833LAB03.15, № 833EM-LAB03.15, № 834LAB03.15, № 834EM-LAB03.15, № 835LAB03.15, № 835EM-LAB03.15, № 836LAB03.15, № 836EM-LAB03.15, № 837LAB03.15, № 837EM-LAB03.15, № 838LAB03.15, № 838EM-LAB03.15, № 839LAB03.15, № 839EM-LAB03.15, № 840LAB03.15, № 840EM-LAB03.15, № 841LAB03.15, № 841EM-LAB03.15, № 842LAB03.15, № 842EM-LAB03.15, № 843LAB03.15, № 843EM-LAB03.15, № 844LAB03.15, № 844EM-LAB03.15, № 845LAB03.15, № 845EM-LAB03.15, № 846LAB03.15, № 846EM-LAB03.15, № 847LAB03.15, № 847EM-LAB03.15, № 848LAB03.15, № 848EM-LAB03.15, № 849LAB03.15, № 849EM-LAB03.15, № 850LAB03.15, № 850EM-LAB03.15, № 851LAB03.15, № 851EM-LAB03.15, № 852LAB03.15, № 852EM-LAB03.15, № 853LAB03.15, № 853EM-LAB03.15, № 854LAB03.15, № 854EM-LAB03.15, № 855LAB03.15, № 855EM-LAB03.15, № 856LAB03.15, № 856EM-LAB03.15, № 857LAB03.15, № 857EM-LAB03.15, № 858LAB03.15, № 858EM-LAB03.15, № 859LAB03.15, № 859EM-LAB03.15, № 860LAB03.15, № 860EM-LAB03.15, № 861LAB03.15, № 861EM-LAB03.15, № 862LAB03.15, № 862EM-LAB03.15, № 863LAB03.15, № 863EM-LAB03.15, № 864LAB03.15, № 864EM-LAB03.15, № 865LAB03.15, № 865EM-LAB03.15, № 866LAB03.15, № 866EM-LAB03.15, № 867LAB03.15, № 867EM-LAB03.15, № 868LAB03.15, № 868EM-LAB03.15, № 869LAB03.15, № 869EM-LAB03.15, № 870LAB03.15, № 870EM-LAB03.15, № 871LAB03.15, № 871EM-LAB03.15, № 872LAB03.15, № 872EM-LAB03.15, № 873LAB03.15, № 873EM-LAB03.15, № 874LAB03.15, № 874EM-LAB03.15, № 875LAB03.15, № 875EM-LAB03.15, № 876LAB03.15, № 876EM-LAB03.15, № 877LAB03.15, № 877EM-LAB03.15, № 878LAB03.15, № 878EM-LAB03.15, № 879LAB03.15, № 879EM-LAB03.15, № 880LAB03.15, № 880EM-LAB03.15, № 881LAB03.15, № 881EM-LAB03.15, № 882LAB03.15, № 882EM-LAB03.15, № 883LAB03.15, № 883EM-LAB03.15, № 884LAB03.15, № 884EM-LAB03.15, № 885LAB03.15, № 885EM-LAB03.15, № 886LAB03.15, № 886EM-LAB03.15, № 887LAB03.15, № 887EM-LAB03.15, № 888LAB03.15, № 888EM-LAB03.15, № 889LAB03.15, № 889EM-LAB03.15, № 890LAB03.15, № 890EM-LAB03.15, № 891LAB03.15, № 891EM-LAB03.15, № 892LAB03.15, № 892EM-LAB03.15, № 893LAB03.15, № 893EM-LAB03.15, № 894LAB03.15, № 894EM-LAB03.15, № 895LAB03.15, № 895EM-LAB03.15, № 896LAB03.15, № 896EM-LAB03.15, № 897LAB03.15, № 897EM-LAB03.15, № 898LAB03.15, № 898EM-LAB03.15, № 899LAB03.15, № 899EM-LAB03.15, № 900LAB03.15, № 900EM-LAB03.15, № 901LAB03.15, № 901EM-LAB03.15, № 902LAB03.15, № 902EM-LAB03.15, № 903LAB03.15, № 903EM-LAB03.15, № 904LAB03.15, № 904EM-LAB03.15, № 905LAB03.15, № 905EM-LAB03.15, № 906LAB03.15, № 906EM-LAB03.15, № 907LAB03.15, № 907EM-LAB03.15, № 908LAB03.15, № 908EM-LAB03.15, № 909LAB03.15, № 909EM-LAB03.15, № 910LAB03.15, № 910EM-LAB03.15, № 911LAB03.15, № 911EM-LAB03.15, № 912LAB03.15, № 912EM-LAB03.15, № 913LAB03.15, № 913EM-LAB03.15, № 914LAB03.15, № 914EM-LAB03.15, № 915LAB03.15, № 915EM-LAB03.15, № 916LAB03.15, № 916EM-LAB03.15, № 917LAB03.15, № 917EM-LAB03.15, № 918LAB03.15, № 918EM-LAB03.15, № 919LAB03.15, № 919EM-LAB03.15, № 920LAB03.15, № 920EM-LAB03.15, № 921LAB03.15, № 921EM-LAB03.15, № 922LAB03.15, № 922EM-LAB03.15, № 923LAB03.15, № 923EM-LAB03.15, № 924LAB03.15, № 924EM-LAB03.15, № 925LAB03.15, № 925EM-LAB03.15, № 926LAB03.15, № 926EM-LAB03.15, № 927LAB03.15, № 927EM-LAB03.15, № 928LAB03.15, № 928EM-LAB03.15, № 929LAB03.15, № 929EM-LAB03.15, № 930LAB03.15, № 930EM-LAB03.15, № 931LAB03.15, № 931EM-LAB03.15, № 932LAB03.15, № 932EM-LAB03.15, № 933LAB03.15, № 933EM-LAB03.15, № 934LAB03.15, № 934EM-LAB03.15, № 935LAB03.15, № 935EM-LAB03.15, № 936LAB03.15, № 936EM-LAB03.15, № 937LAB03.15, № 937EM-LAB03.15, № 938LAB03.15, № 938EM-LAB03.15, № 939LAB03.15, № 939EM-LAB03.15, № 940LAB03.15, № 940EM-LAB03.15, № 941LAB03.15, № 941EM-LAB03.15, № 942LAB03.15, № 942EM-LAB03.15, № 943LAB03.15, № 943EM-LAB03.15, № 944LAB03.15, № 944EM-LAB03.15, № 945LAB03.15, № 945EM-LAB03.15, № 946LAB03.15, № 946EM-LAB03.15, № 947LAB03.15, № 947EM-LAB03.15, № 948LAB03.15, № 948EM-LAB03.15, № 949LAB03.15, № 949EM-LAB03.15, № 950LAB03.15, № 950EM-LAB03.15, № 951LAB03.15, № 951EM-LAB03.15, № 952LAB03.15, № 952EM-LAB03.15, № 953LAB03.15, № 953EM-LAB03.15, № 954LAB03.15, № 954EM-LAB03.15, № 955LAB03.15, № 955EM-LAB03.15, № 956LAB03.15, № 956EM-LAB03.15, № 957LAB03.15, № 957EM-LAB03.15, № 958LAB03.15, № 958EM-LAB03.15, № 959LAB03.15, № 959EM-LAB03.15, № 960LAB03.15, № 960EM-LAB03.15, № 961LAB03.15, № 961EM-LAB03.15, № 962LAB03.15, № 962EM-LAB03.15, № 963LAB03.15, № 963EM-LAB03.15, № 964LAB03.15, № 964EM-LAB03.15, № 965LAB03.15, № 965EM-LAB03.15, № 966LAB03.15, № 966EM-LAB03.15, № 967LAB03.15, № 967EM-LAB03.15, № 968LAB03.15, № 968EM-LAB03.15, № 969LAB03.15, № 969EM-LAB03.15, № 970LAB03.15, № 970EM-LAB03.15, № 971LAB03.15, № 971EM-LAB03.15, № 972LAB03.15, № 972EM-LAB03.15, № 973LAB03.15, № 973EM-LAB03.15, № 974LAB03.15, № 974EM-LAB03.15, № 975LAB03.15, № 975EM-LAB03.15, № 976LAB03.15, № 976EM-LAB03.15, № 977LAB03.15, № 977EM-LAB03.15, № 978LAB03.15, № 978EM-LAB03.15, № 979LAB03.15, № 979EM-LAB03.15, № 980LAB03.15, № 980EM-LAB03.15, № 981LAB03.15, № 981EM-LAB03.15, № 982LAB03.15, № 982EM-LAB03.15, № 983LAB03.15, № 983EM-LAB03.15, № 984LAB03.15, № 984EM-LAB03.15, № 985LAB03.15, № 985EM-LAB03.15, № 986LAB03.15, № 986EM-LAB03.15, № 987LAB03.15, № 987EM-LAB03.15, № 988LAB03.15, № 988EM-LAB03.15, № 989LAB03.15, № 989EM-LAB03.15, № 990LAB03.15, № 990EM-LAB03.15, № 991LAB03.15, № 991EM-LAB03.15, № 992LAB03.15, № 992EM-LAB03.15, № 993LAB03.15, № 993EM-LAB03.15, № 994LAB03.15, № 994EM-LAB03.15, № 995LAB03.15, № 995EM-LAB03.15, № 996LAB03.15, № 996EM-LAB03.15, № 997LAB03.15, № 997EM-LAB03.15, № 998LAB03.15, № 998EM-LAB03.15, № 999LAB03.15, № 999EM-LAB03.15, № 1000LAB03.15, № 1000EM-LAB03.15, № 1001LAB03.15, № 1001EM-LAB03.15, № 1002LAB03.15, № 1002EM-LAB03.15, № 1003LAB03.15, № 1003EM-LAB03.15, № 1004LAB03.15, № 1004EM-LAB03.15, № 1005LAB03.15, № 1005EM-LAB03.15, № 1006LAB03.15, № 1006EM-LAB03.15, № 1007LAB03.15, № 1007EM-LAB03.15, № 1008LAB03.15, № 1008EM-LAB03.15, № 1009LAB03.15, № 1009EM-LAB03.15, № 1010LAB03.15, № 1010EM-LAB03.15, № 1011LAB03.15, № 1011EM-LAB03.15, № 1012LAB03.15, № 1012EM-LAB03.15, № 1013LAB03.15, № 1013EM-LAB03.15, № 1014LAB03.15, № 1014EM-LAB03.15, № 1015LAB03.15, № 1015EM-LAB03.15, № 1016LAB03.15, № 1016EM-LAB03.15, № 1017LAB03.15, № 1017EM-LAB03.15, № 1018LAB03.15, № 1018EM-LAB03.15, № 1019LAB03.15, № 1019EM-LAB03.15, № 1020LAB03.15, № 1020EM-LAB03.15, № 1021LAB03.15, № 1021EM-LAB03.15, № 1022LAB03.15, № 1022EM-LAB03.15, № 1023LAB03.15, № 1023EM-LAB03.15, № 1024LAB03.15, № 1024EM-LAB03.15, № 1025LAB03.15, № 1025EM-LAB03.15, № 1026LAB03.15, № 1026EM-LAB03.15, № 1027LAB03.15, № 1027EM-LAB03.15, № 1028LAB03.15, № 1028EM-LAB03.15, № 1029LAB03.15, № 1029EM-LAB03.15, № 1030LAB03.15, № 1030EM-LAB03.15, № 1031LAB03.15, № 1031EM-LAB03.15, № 1032LAB03.15, № 1032EM-LAB03.15, № 1033LAB03.15, № 1033EM-LAB03.15, № 1034LAB03.15, № 1034EM-LAB03.15, № 1035LAB03.15, № 1035EM-LAB03.15, № 1036LAB03.15, № 1036EM-LAB03.15, № 1037LAB03.15, № 1037EM-LAB03.15, № 1038LAB03.15, № 1038EM-LAB03.15, № 1039LAB03.15, № 1039EM-LAB03.15, № 1040LAB03.15, № 1040EM-LAB03.15, № 1041LAB03.15, № 1041EM-LAB03.15, № 1042LAB03.15, № 1042EM-LAB03.15, № 1043LAB03.15, № 1043EM-LAB03.15, № 1044LAB03.15, № 1044EM-LAB03.15, № 1045LAB03.15, № 1045EM-LAB03.15, № 1046LAB03.15, № 1046EM-LAB03.15, № 1047LAB03.15, № 1047EM-LAB03.15, № 1048LAB03.15, № 1048EM-LAB03.15, № 1049LAB03.15, № 1049EM-LAB03.15, № 1050LAB03.15, № 1050EM-LAB03.15, № 1051LAB03.15, № 1051EM-LAB03.15, № 1052LAB03.15, № 1052EM-LAB03.15, № 1053LAB03.15, № 1053EM-LAB03.15, № 1054LAB03.15, № 1054EM-LAB03.15, № 1055LAB03.15, № 1055EM-LAB03.15, № 1056LAB03.15, № 1056EM-LAB03.15, № 1057LAB03.15, № 1057EM-LAB03.15, № 1058LAB03.15, № 1058EM-LAB03.15, № 1059LAB03.15, № 1059EM-LAB03.15, № 1060LAB03.15, № 1060EM-LAB03.15, № 1061LAB03.15, № 1061EM-LAB03.15, № 1062LAB03.15, № 1062EM-LAB03.15, № 1063LAB03.15, № 1063EM-LAB03.15, № 1064LAB03.15, № 1064EM-LAB03.15, № 1065LAB03.15, № 1065EM-LAB03.15, № 1066LAB03.15, № 1066EM-LAB03.15, № 1067LAB03.15, № 1067EM-LAB03.15, № 1068LAB03.15, № 1068EM-LAB03.15, № 1069LAB03.15, № 1069EM-LAB03.15, № 1070LAB03.15, № 1070EM-LAB03.15, № 1071LAB03.15, № 1071EM-LAB03.15, № 1072LAB03.15, № 1072EM-LAB03.15, № 1073LAB03.15, № 1073EM-LAB03.15, № 1074LAB03.15, № 1074EM-LAB03.15, № 1075LAB03.15, № 1075EM-LAB03.15, № 1076LAB03.15, № 1076EM-LAB03.15, № 1077LAB03.15, № 1077EM-LAB03.15, № 1078LAB03.15, № 1078EM-LAB03.15, № 1079LAB03.15, № 1079EM-LAB03.15, № 1080LAB03.15, № 1080EM-LAB03.15, № 1081LAB03.15, № 1081EM-LAB03.15, № 1082LAB03.15, № 1082EM-LAB03.15, № 1083LAB03.15, № 1083EM-LAB03.15, № 1084LAB03.15, № 1084EM-LAB03.15, № 1085LAB03.15, № 1085EM-LAB03.15, № 1086LAB03.15, № 1086EM-LAB03.15, № 1087LAB03.15, № 1087EM-LAB03.15, № 1088LAB03.15, № 1088EM-LAB03.15, № 1089LAB03.15, № 1089EM-LAB03.15, № 1090LAB03.15, № 1090EM-LAB03.15, № 1091LAB03.15, № 1091EM-LAB03.15, № 1092LAB03.15, № 1092EM-LAB03.15, № 1093LAB03.15, № 1093EM-LAB03.15, № 1094LAB03.15, № 1094EM-LAB03.15, № 1095LAB03.15, № 1095EM-LAB03.15, № 1096LAB03.15, № 1096EM-LAB03.15, № 1097LAB03.15, № 1097EM-LAB03.15, № 1098LAB03.15, № 1098EM-LAB03.15, № 1099LAB03.15, № 1099EM-LAB03.15, № 1100LAB03.15, № 1100EM-LAB03.15, № 1101LAB03.15, № 1101EM-LAB03.15, № 1102LAB03.15, № 1102EM-LAB03.15, № 1103LAB03.15, № 1103EM-LAB03.15, № 1104LAB03.15, № 1104EM-LAB03.15, № 1105LAB03.15, № 1105EM-LAB03.15, № 1106LAB03.15, № 1106EM-LAB03.15, № 1107LAB03.15, № 1107EM-LAB03.15, № 1108LAB03.15, № 1108EM-LAB03.15, № 1109LAB03.15, № 1109EM-LAB03.15, № 1110LAB03.15, № 1110EM-LAB03.15, № 1111LAB03.15, № 1111EM-LAB03.15, № 1112LAB03.15, № 1112EM-LAB03.15, № 1113LAB03.15, № 1113EM-LAB03.15, № 1114LAB03.15, № 1114EM-LAB03.15, № 1115LAB03.15, № 1115EM-LAB03.15, № 1116LAB03.15, № 1116EM-LAB03.15, № 1117LAB03.15, № 1117EM-LAB03.15, № 1118LAB03.15, № 1118EM-LAB03.15, № 1119LAB03.15, № 1119EM-LAB03.15, № 1120LAB03.15, № 1120EM-LAB03.15, № 1121LAB03.15, № 1121EM-LAB03.15, № 1122LAB03.15, № 1122EM-LAB03.15, № 1123LAB03.15, № 1123EM-LAB03.15, № 1124LAB03.15, № 1124EM-LAB03.15, № 1125LAB03.15, № 1125EM-LAB03.15, № 1126LAB03.15, № 1126EM-LAB03.15, № 1127LAB03.15, № 1127EM-LAB03.15, № 1128LAB03.15, № 1128EM-LAB03.15, № 1129LAB03.15, № 1129EM-LAB03.15, № 1130LAB03.15, № 1130EM-LAB03.15, № 1131LAB03.15, № 1131EM-LAB03.15, № 1132LAB03.15, № 1132EM-LAB03.15, № 1133LAB03.15, № 1133EM-LAB03.15, № 1134LAB03.15, № 1134EM-LAB03.15, № 1135LAB03.15, № 1135EM-LAB03.15, № 1136LAB03.15, № 1136EM-LAB03.15, № 1137LAB03.15, № 1137EM-LAB03.15, № 1138LAB03.15, № 1138EM-LAB03.15, № 1139LAB03.15, № 1139EM-LAB03.15, № 1140LAB03.15, № 1140EM-LAB03.15, № 1141LAB03.15, № 1141EM-LAB03.15, № 1142LAB03.15, № 1142EM-LAB03.15, № 1143LAB03.15, № 1143EM-LAB03.15, № 1144LAB03.15, № 1144EM-LAB03.15, № 1145LAB03.15, № 1145EM-LAB03.15, № 1146LAB03.15, № 1146EM-LAB03.15, № 1147LAB03.15, № 1147EM-LAB03.15, № 1148LAB03.15

## Displayboards

Easy to mount & present



## Working cases

For training & presentations



## Workplaces

For training & presentations



# Thanks for your Attention



**PHONE**

+420 800 100 671



**E-MAIL**

info@inels.com



**WEB**

www.inels.com



**PHONE**

+420 573 514 242



**E-MAIL**

elko@elkoep.com



**WEB**

www.elkoep.com